

# Erasmus+ Research Hub: building a transnational evidence network

Karol Sobestjański

Research and Analysis Team Coordinator

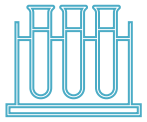
Foundation for the Development of the Education System

*Evidence-based approach in Erasmus+ and European Solidarity Corps*

25-26 November 2025, Warsaw (Poland)



# Background: challenges in current research landscape



Knowledge about processes, sectors, priorities of Erasmus+ is **dispersed** between countries, National Agencies, Erasmus+ sectors



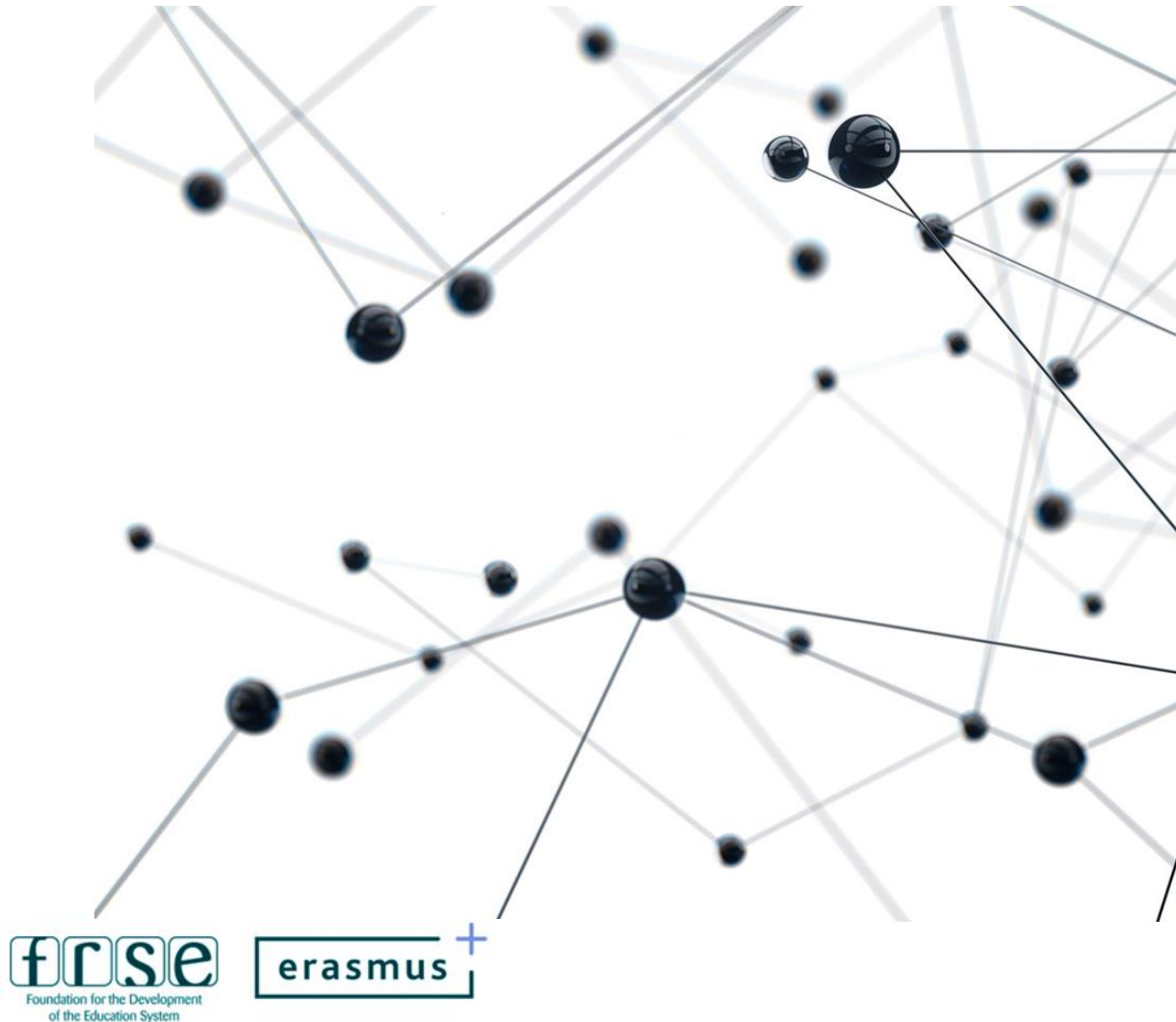
NAs collect large amounts of primary data and information on E+  
- it is often **costly and time-consuming**



Lack of harmonisation: methodology, results, recommendations, good practices can be applied not only by NAs which collected data – they are often **universal and could be shared among all stakeholders**

# Need for collaboration

Collaboration, harmonized methods, and knowledge-sharing platforms are essential to address challenges.

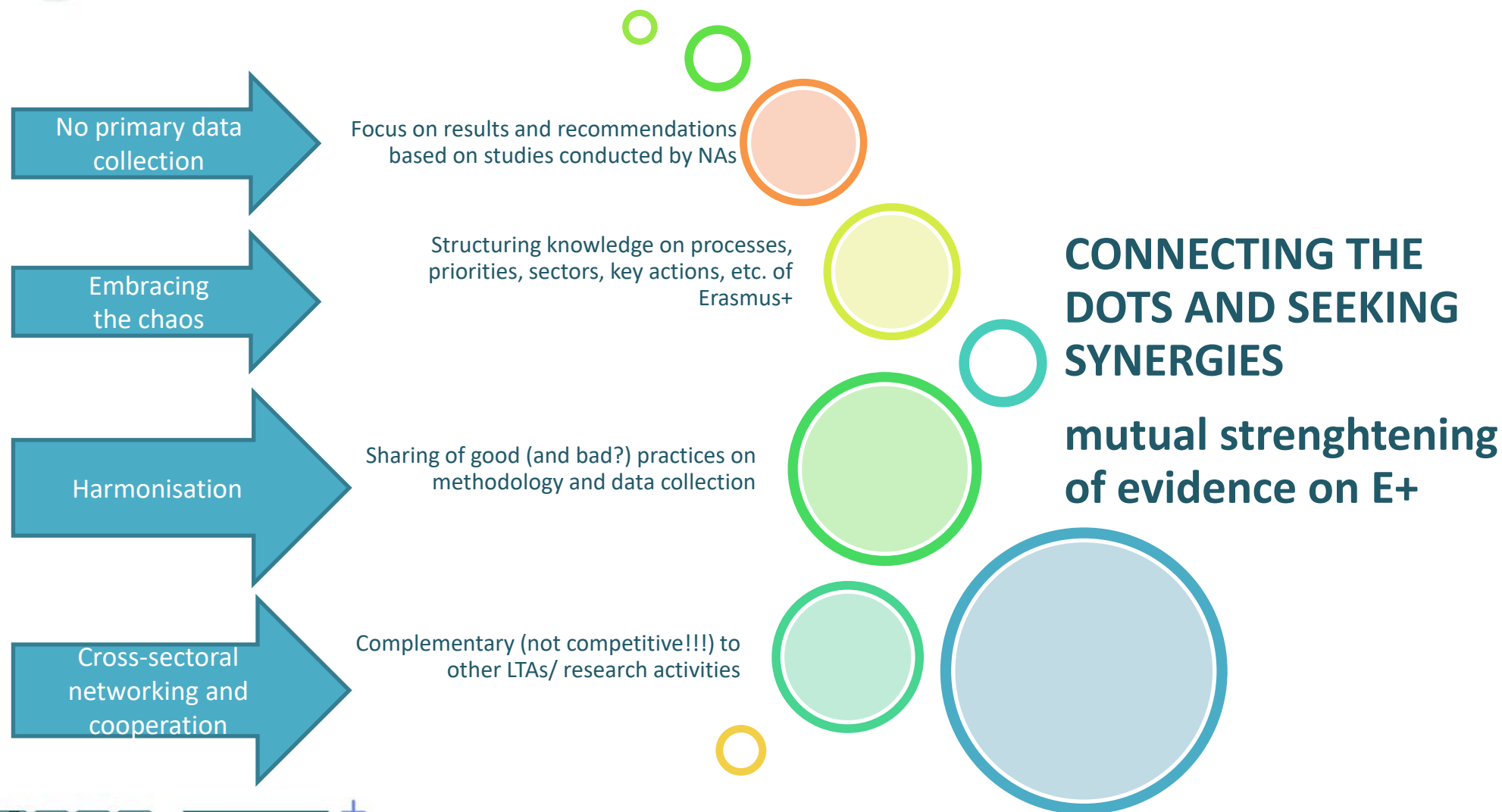


# Project Partners



- 10 National Agencies representing 5 Erasmus+ sectors
- 4 SALTOs as strategic partners
- ...

# LTA Research Hub



# Connecting the dots through meta-analysis

## **Purpose of meta-analysis**

Meta-analysis connects diverse research findings to identify patterns and gaps among studies.

## **Synthesis for insights**

Combining multiple data sources provides comprehensive insights that support program improvements.

## **Validation and reliability**

Meta-analysis validates findings across different contexts, enhancing reliability and applicability.

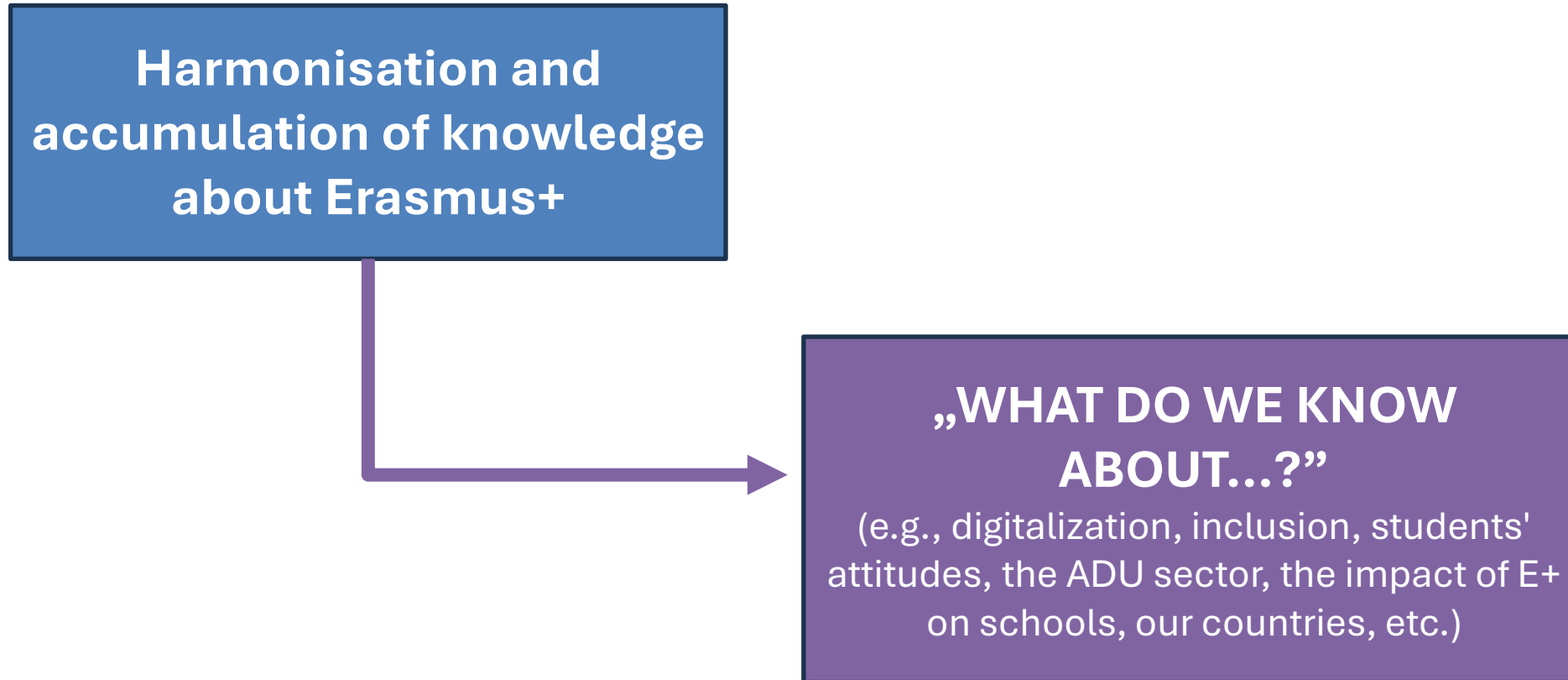
## **Coherent evidence base**

The approach transforms isolated data into a coherent evidence base for strategic planning and innovation.

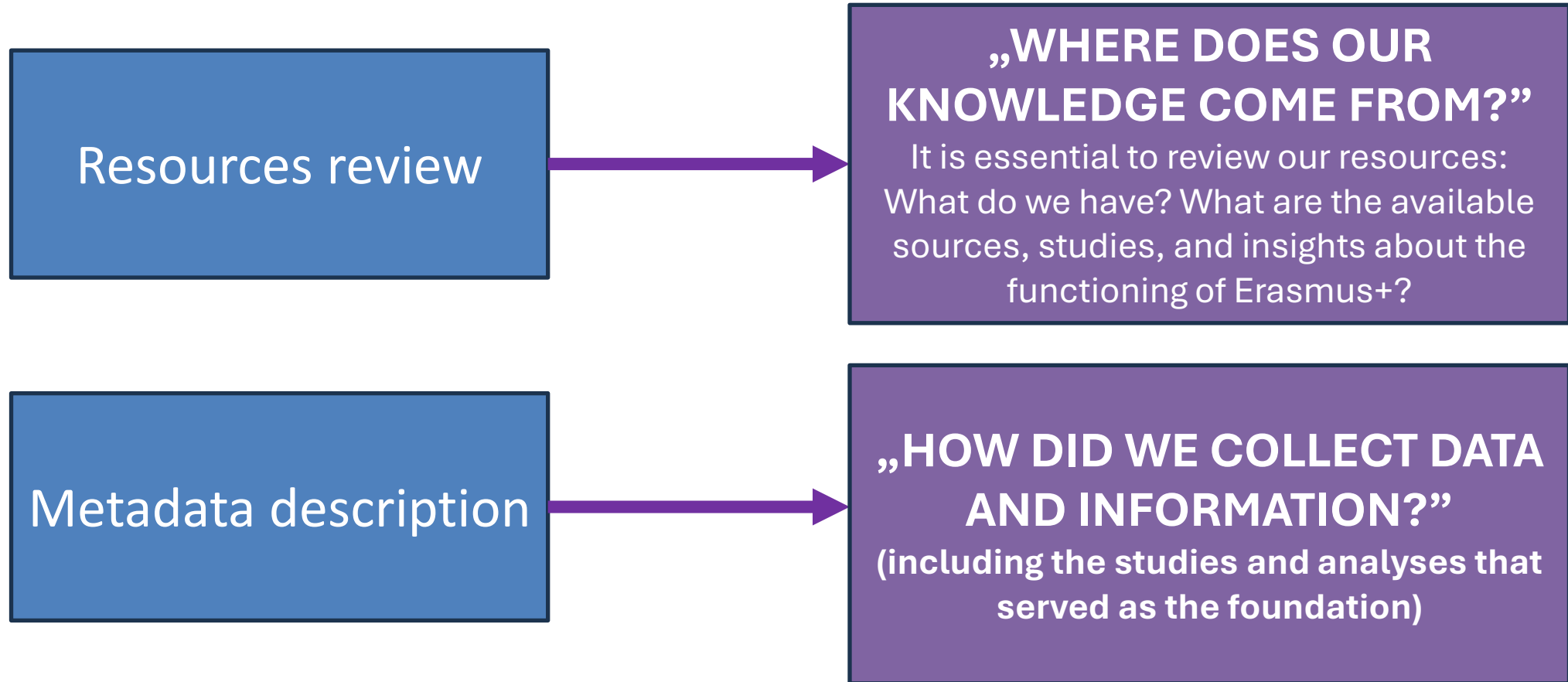




# Operational level



# Necessary steps:





# Resources review and metadata description – template for the Partners

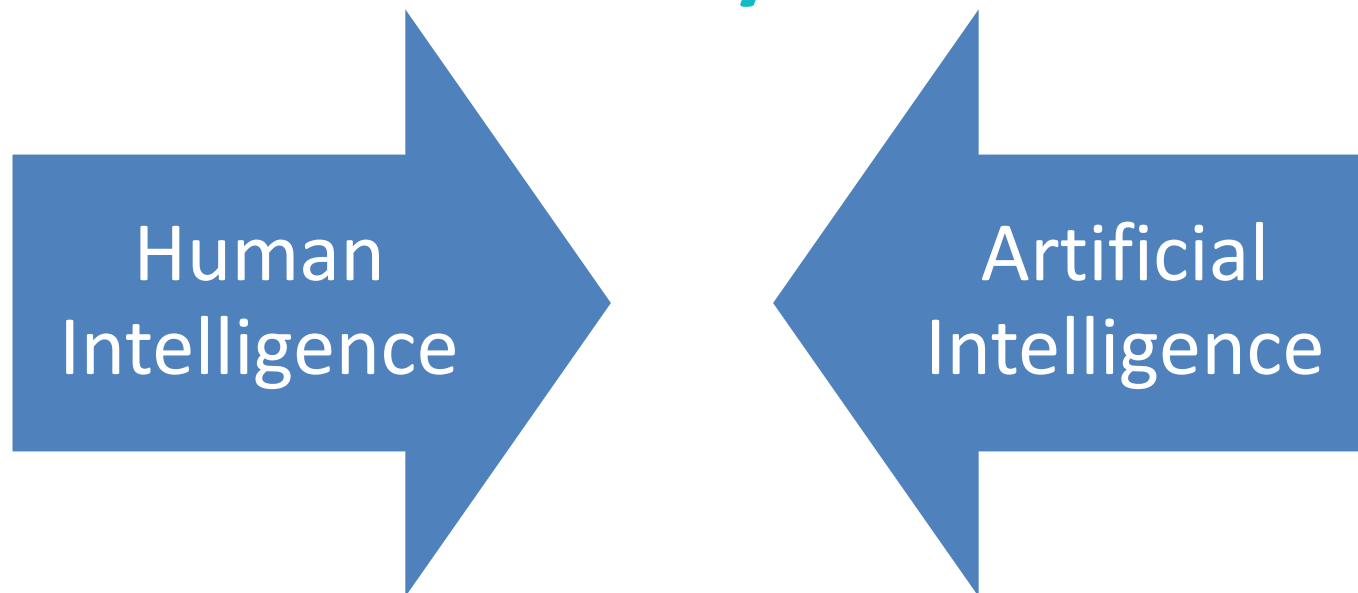
	A	B	C	D	E	F	G	H	I	J	K
1	Key findings						Recommendations				
2	The most important results discovered through the study						The group to which they are addressed				
3	Maximum 400 characters for each finding						Choose categories from the list, and (if necessary) enter your own categories.				
4	Finding 1 [your text]						Select...				
5							Select...				
6							Select...				
7							[your text]				
8	Finding 2 [your text]						Maximum 400 characters for each recommendation				
9							Recommendation 1 [your text]				
10											
11											
12											
13	Finding 3 [your text]						Recommendation 2 [your text]				
14											
15											
16											
17	Finding 4 [your text]						Recommendation 3 [your text]				
18											
19											
20											
21	Finding 5 [your text]						Recommendation 4 [your text]				
22											
23											
24											
25											

<
>
...
Specific information
Key findings and recommendation
Methodology
Categories
+
:
◀
▶

# Resources review and metadata description – database

1	Name of publication/ source	Name of the study(-ies)	National Agency Code:	Country	Link to the publication/ source	Source of funding	Key words 1	Key words 2	Key words 3	Key words 4	Key words 5
15	14. Zapojení škol do programu	Zapojení škol do programu	DZS	Czechia	<a href="https://www.dzs.cz/en/media/1876">https://www.dzs.cz/en/media/1876</a>		youth	digital	teacher(s)	pedagogy	courses and training activities
16	15. Erasmus+ Strategische	Erasmus+ Strategische	DE01	Germany		NA's operational budget	Erasmus+	higher education	cooperation	participation	impact
17	16. Erasmus+ Cooperation	Evaluation of participation	DE01	Germany	<a href="https://eu.daad.de/media/ien/eu.daad">https://eu.daad.de/media/ien/eu.daad</a>	NA's operational budget	Erasmus+	higher education	cooperation	participation	impact
18	17. Impact of Erasmus+ on the Adult	Impact of Erasmus+ on the	DE02	Germany	<a href="https://epale.ec.europa.eu/system/">https://epale.ec.europa.eu/system/</a>	TCA budget	adult education	impact	Key Action 1	Key Action 2	
19	18. Transnational analysis	Transnational analysis of the	DE02	Germany	<a href="https://epale.ec.europa.eu/system/">https://epale.ec.europa.eu/system/</a>	TCA Budget	adult education	impact	transnational	Key Action 1	inclusion

# Analysis



# Analysis



```
graph LR; HI[Human Intelligence] --> Analysis[Critical analysis of existing resources, conclusions and recommendations provided by the Parnters];
```

Human Intelligence

Critical analysis of existing resources, conclusions and recommendations provided by the Parnters

# Analysis

Indicate, based on the file, the most important recommendations regarding issues related to diversity (inclusion). Always include, below the summary, the sources of data (report titles) and the countries covered by the analysis, taking into account that some studies are international while others are national.

Artificial  
Intelligence

## Sources:

- *Impact of Erasmus+ on the Adult Education Sector in Germany* (Germany)
- *Transnational Analysis of the Impact of Erasmus+ on the Adult Education Sector* (Poland + 13 countries)
- *Report on the Needs of Beneficiaries on the Topic of Inclusion and Diversity in the Erasmus+ Programme* (Croatia + 6 countries)



## 3. Report on the Needs of Beneficiaries on the Topic of Inclusion and Diversity in the Erasmus+ Programme

Države: Hrvatska, Poljska, Portugalska, Islandija, Litva, Švedska, Španija

Obseg: Transnacionalno

### Priporočila:

- **Poenostavitev administrativnih postopkov** in meril upravičenosti za zmanjšanje obremenitve udeležencev in koordinatorjev.
- **Tematska usposabljanja** – splošna o vključevanju ter poglobljena o specifičnih temah.
- **Povečanje ozaveščenosti o proračunu za podporo vključevanju** in jasne smernice za njegovo uporabo.
- **Aktivno vključevanje družin** v proces mobilnosti.
- **Mehanizmi za izmenjavo dobrih praks** – mednarodne mreže, podatkovne baze, spletni seminarji, zgodbe o uspehu.

# Value for stakeholders

## National Agencies

Providing access to structured evidence and tools, easing data collection and reporting burden for agencies.

## Practitioners

Offering insights into proven practices enhancing project design and implementation effectiveness.

## Decision-makers

Delivering reliable data for informed strategic decisions and policy development processes.

## Researchers

Increasing visibility for research and fosters opportunities for methodological exchange.





# Engage and contribute



## **Inclusive Participation**

NA stakeholders can join the Erasmus+ Research Hub at any project stage with flexible and open participation.

## **Knowledge Sharing and Co-creation**

Collaboration and sharing knowledge among partners fosters co-creation of innovative research solutions.

## **Evidence-Based Impact**

The Hub helps transform research into action for policies and practices based on reliable data.



**Karol Sobestjański**

[ksobestjanski@frse.org.pl](mailto:ksobestjanski@frse.org.pl)



**Research and Analysis Unit**

[zab@frse.org.pl](mailto:zab@frse.org.pl)

**[www.frse.org.pl](http://www.frse.org.pl)**

