



EVIDENCE-BASED APPROACH: CONFERENCE CONCLUSIONS AND NEW RESEARCH DIRECTIONS



- How has the Erasmus+ programme actually worked in recent years in individual fields? In what ways has it contributed to EU priorities? Where is it heading in the next financial perspective?
- Are we able to build synergy between research, practice and policy decisions, or are we still getting lost in silos, dispersed data and indicators?

Researchers, practitioners and decision-makers sought answers to these questions during the two-day conference “Evidence-based approach in Erasmus+ and European Solidarity Corps” (25-26 November 2025). Below are the key conclusions and recommendations from selected presentations and the panel discussion.

Erasmus+ – skill development and social inclusion in practice

The research findings presented at the conference show that the Erasmus+ programme has a real impact on improving the competences of its participants, but also indicate that further action is needed to achieve greater inclusion and support for groups with fewer opportunities.

Dominika Przybytek
Erasmus Student Network

For students, Erasmus+ primarily means the development of soft skills.

79% of students highlight the programme's impact on improving their intercultural skills.

70% have become more culturally aware and multilingual.

The programme is perceived as inclusive, but it is still necessary to provide language support for students with fewer opportunities and assistance with visa procedures. The cost of living and accommodation for mobility participants also remain a challenge.

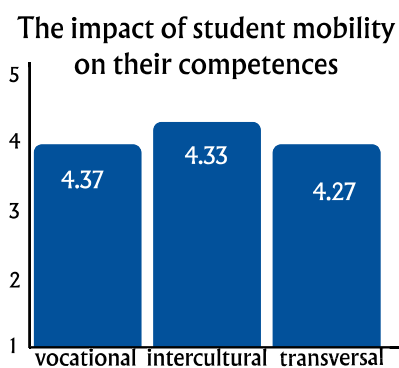


Julita Pieńkosz
Foundation for the Development
of the Education System






Mobility in the field of vocational education and training (VET) facilitates the development of learner's professional, intercultural and transversal skills and has a positive impact on their further educational and professional paths.

Organising mobility is particularly important for small schools and institutions operating in smaller towns. It can be a real game changer, reducing inequalities and increasing the attractiveness of schools. The challenge remains to include learners with special needs or fewer opportunities in mobility programmes.



Mobility in the field of adult education is more than just learning – it is social integration and increased civic engagement. Research by the RIA-AE network covering 21 countries shows that participation in mobility programmes:

-  strengthens skills,
-  builds social bonds,
-  shapes pro-social attitudes.

Janina Meyer, Melanie Erckrath
RIA-AE Network



Measuring horizontal priorities

Practitioners need reliable data to effectively implement horizontal priorities such as Participation in democratic life and Environment and climate action.

Dorina-Alina Beşleaga
SALTO Participation & Information



Meaningful participation of young people in Erasmus+ and European Solidarity Corps programmes requires an evidence-based approach.



Research shows how young people actually participate in democratic life, helps measure the quality of engagement rather than only the number of participants, and supports the development of effective mechanisms for including young people.



By analysing experiences, it is possible to avoid “tokenism”, i.e. the superficial inclusion of young people, and to design solutions that respond to their real needs.

Felix Tran
SALTO Green



Developing robust indicators makes it easier to check how national agencies address the Environment and climate action priority in Erasmus+ projects.

22 out of 49 agencies have implemented a green transition policy for transport and business travel.

14 out of 49 agencies have introduced restrictive policies on air travel.

Monitoring the indicators has made it possible to support agencies more effectively, develop a training system, share best practices and design tools that respond to the real needs of beneficiaries.



Challenges related to data availability for decision-makers and practitioners

The need for rapid access to data was discussed during the conference. Different groups expect different information – tailored to the national context, the specific audience and the current situation (e.g. related to the pandemic). Scientific research does not always keep up with these needs, as it requires time for analysis and reflection. Another problem is the dispersion and duplication of data, as well as the use of scientific jargon, which makes it difficult to understand the results.

Andreas Karsten
RAY Network



The RAY Network, operating since 2008, has collected data from over 100,000 project participants. The data shows that:



there is a need for rapid, concrete and attractive results for decision-makers, without compromising the quality of the analysis;



research should be designed in a participatory way and published in various formats – from policy briefs to full reports – so that it meets the real needs of its audience.

The Erasmus+ Research Hub project is a response to the dispersion and duplication of research. Its objectives are:



to harmonise research;



to create a platform for knowledge exchange between agencies, researchers and practitioners.

By analysing the conclusions and recommendations from the research, it will be possible to develop coherent guidelines for policymakers and practitioners. The Research Hub will become a catalyst for evidence-based action across the entire Erasmus+ ecosystem.

Karol Sobestjański
Foundation for the Development
of the Education System





Research and consultations shape the future of the Erasmus+ programme



During the panel discussion, Christella Petridou from the European Commission emphasised that the mid-term evaluation of the programme and the results of public consultations were taken into account when planning the new financial perspective.

As a result, the draft includes a separate chapter on social inclusion, special support measures for new applicants, and simplified cost options, lump sums and proportional reporting requirements. These changes are not merely desirable developments, but decisions based on evidence provided by stakeholders.

Panellists agreed that Erasmus+ must be more accessible and inclusive in the future. Despite progress to date, barriers remain for smaller and informal organisations.

Key actions include:

- simplifying procedures
- proportional reporting
- support for new applicants



Combining data and decisions: How can research shape policy?

Moving away from silos and counteracting data dispersion

Evidence only matters when data, analysis and programme implementation are intertwined, rather than scattered across sectoral silos.

Dominika Przybyłek
Erasmus Student Network



Data fragmentation remains a major challenge – practitioners and policymakers often struggle to navigate the excess of parallel research. Mechanisms enabling synergy need to be introduced, the visibility of resources increased, and regular communication between stakeholders ensured.

Christella Petridou
Komisja Europejska



Jan Truszczyński
Team Europe Direct



Research should be planned in such a way as to prevent unnecessary duplication of existing analyses and inefficient use of public funds.

Artificial intelligence as an opportunity: methodological flexibility and meta-analysis

In the age of AI, new research approaches are needed – not only traditional statistics, but also synthesis and meta-level research. However, integrating different types of knowledge and synthesising dispersed research in order to build a system that supports both policy and practice in a dynamic environment remains a challenge.

Pasi Silander
SALTO Digital



How can data be communicated to recipients?

Carmen Teubl-Kiviniemi
RAY Network Coordination



Fewer lengthy reports – more comprehensible data. Simplicity, accessibility and language that is understandable to programme participants are priorities.

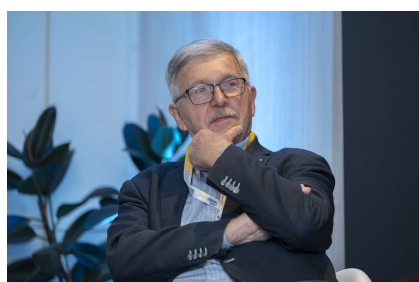
Christella Petridou
Komisja Europejska



Visualisation and data storytelling are becoming key to data usability – they turn information into a story that decision-makers can understand and put into practice. Data without interpretation does not translate into knowledge, and without knowledge there can be no effective policy.

Comparability of data between countries

Jan Truszczyński
Team Europe Direct



Comparative data demonstrating how one country's system performs against others has the strongest impact on decision-makers. Data comparability helps to maintain politicians' focus and puts them under pressure to continuously improve their systems.

Moving from data to knowledge, and from knowledge to policy

Carmen Teubl-Kiviniemi
RAY Network Coordination



Experts should be listened to. Tools and processes are needed to translate research findings into specific recommendations, especially within the new financial framework of the Erasmus+ programme.

About the conference

The conference “Evidence-based approach in Erasmus+ and European Solidarity Corps”, organised in Warsaw by FRSE, brought together:



100 participants



from 30 countries

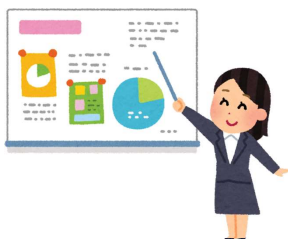


from 3 continents.

The programme included presentations by experts from the European Commission, the SALTO network, the RAY Network, as well as representatives of national agencies and academia. Chrystalla Petridou from the European Commission delivered the plenary lecture, emphasising the importance of evidence-based strategic planning.



Do you want to know more?
Visit our website:



Do you want to know more?

Contact us: zab@frse.org.pl

Content development: Julita Pieńkosz

Graphic design: Monika Mokrzycka

Translation into English: Artur Cholewiński

Photos: Szymon Łaszewski

Erasmus+



UNIA EUROPEJSKA



Dofinansowane przez
Unię Europejską